

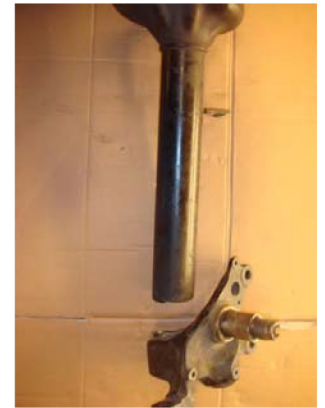
MITSUBISHI STARION INSTALLATION INSTRUCTION

NO. 0091

1. **Disassemble the original front coilover from the vehicle and take out the original upper mount, spring, disc brake, caliper & shock.**



2. **Between the OE Shock and the hub, you have to allow 25-30mm of the shock holder to remain. Make a mark and cut the shock.**



3. **Please take out the supplied tube and insert into the OE hub. There are some tolerances of the OE shock holder so please modify the OE tube to suit.**



4. **Please ensure that you weld our tube 100% completely. You have to weld our tube onto the hub. (Please do not weld the tube to the shock holder). Please ensure those steps are carried out correctly. If not, the front camber angle may be affected.**

Note: Please ensure supplied tube is prepped correctly for welding, grind edges if required to ensure a good strong weld and surface is smooth.



Remarks:

1. After finishing the above steps, please paint the hub and our tube to avoid rust. For your convenience, we supply these unpainted.
2. After finishing all steps, please install our shocks, OE caliper, and brake disc back onto the car.
3. Ensure all work is carried out by a trained technician or fabricator.
4. It is the sole responsibility of the installer to ensure safety for driving.